

REBUILD. RESTORE. RENEW.

2022-2023

SUPPORTING THE WORK OF THE PEOPLE



ANCIENT PATH MINISTRIES

REVEALING KINGDOM UNMASKED

Whenever anyone turns to the Lord, the veil is taken away. Now the Lord is the Spirit, and where the Spirit of the Lord is, there is freedom. And we, who with unveiled faces all reflect the Lord's glory, are being transformed into his likeness with ever-increasing glory, which comes from the Lord, who is the Spirit. - 2 Corinthians 3:16-18



Dear Friends of Ancient Path/La Senda Antigua

Welcome to our

2022-23 Ministry Support/Project Update!

Across the next several pages, we offer you a compelling vision of next steps in the work of the people of the ancient path. The hand of God is strong on us and your partnership is key.

To begin, a huge thanks for being with us from the beginning and for hanging in these last two years. We have seen the work of bringing souls into the Kingdom increase even as pandemic swept the world. As we emerge with faces unveiled anew, the work continues to grow and expand the reach of the Gospel. What follows is reminder of partnership and a peek at major projects.

RECASTING PARTNERSHIP VISION

Join us in the work of La Senda Antigua. Help the reach of the Gospel and connections in Christ increase and grow.

ON THE ANCIENT PATH WITH US. PRAY FOR THE MINISTRY.

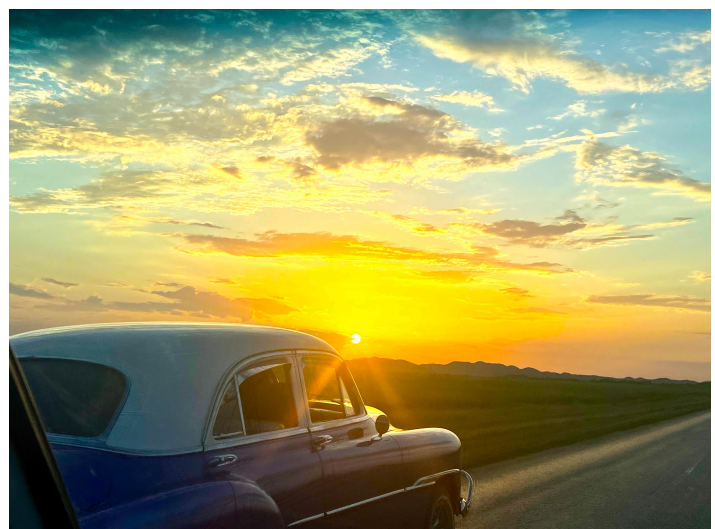
This is the most crucial thing you can do to play your part in every moment.

Pray for Ancient Path/La Senda Antigua
in 2022-23 and beyond.

Pastora Yami, Pastor Kevin & Tonni, our leadership and servant ministry team, that we be faithful in and well equipped for the ministry ahead.

Cuba in time of great economic and civil crisis, and the complex US-Cuba political relationship.

Ask the Lord of the harvest to send workers into the field. He will show you what to do next.



ON THE PATH WITH US. COVENANT FINANCIAL PARTNERS.

Our financial strategy is simple. From the day one, God has built all aspects of this work on personal relationships. He will grow us for His splendor in the same manner. A firm financial foundation is crucial. We have laid out the vision as a simple equation.



What this indicates is that covenant financial partnerships equivalent to regular investments of 100 @ \$100 monthly, 20 @ \$250 monthly, and 20 @ \$500 monthly will allow the people of Ancient Path/La Senda Antigua to carry out their mission for the foreseeable future. 140 or so people can CHANGE THE WORLD.

HOW TO GIVE

Online giving through partners at
Four Corners Community Church of West Chester, OH

ON OUR SECURE WEBSITE

<https://ancientpathministries.org/onlinegiving>
Follow prompts to Four Corners giving site
Select Ancient Path Ministries Fund. Recurring gift.

TEXT TO GIVE through Four Corners Church

Text KEYWORDS to 513-806-2724

Click link. Select Ancient Path Ministries Fund

BANK/IRA/DAF/PERSONAL OR BUSINESS CHECKS

Set recurring or 1-time gift through your bank bill pay to
Ancient Path Ministries
10889 Lake Thames Dr, Cincinnati, OH, 45242

Send Money with Zelle®

Scan in your banking app to pay.

Ancient Path Ministries



Monthly Covenant Partnership Support Goal (2023)

\$21,600

Covenant Partnership Support Actual (5/2022)

\$8917 (41.2%)



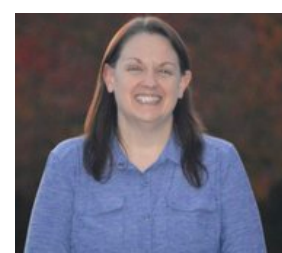
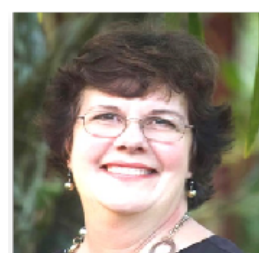
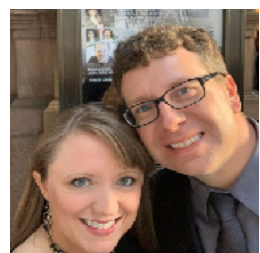
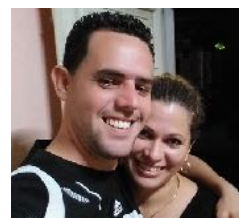
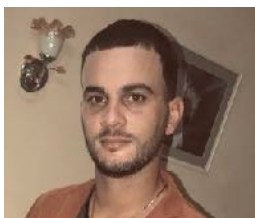
YOUR FAITHFUL SUPPORT ENABLES A GREAT TEAM OF KINGDOM WORKERS AND THE PROJECTS WHICH WE UNDERTAKE TO EXPAND THE REACH OF THE GOSPEL.

Meeting our goal will make sure the work continues!

Now, an in-depth look at the Kingdom work made possible by your partnership

ANCIENT PATH STAFF/BOARD

Our staff is growing! We train up and send out more workers into the field each month. Missionaries, pastors, administrators, and board members do a great deal of Kingdom detail. While our US-based Board members are volunteers, Pastora Kevin & Tonni Jobe, Pastora Yami Cruz, and Cuba-based staff are housed, fed & watered by your faithful partnership. Your support is vital to the mission.



Kevin, Tonni & Yami
Luis & Maria Ester
Sandra & Reynol
Linda
Ana Ibis & Omar

Ricardo & Yacky
Diosmel & Yainesi
Jennifer & Kyle
Tony & Idania

Michael
Ivis & Leonardo
Lisuan & Ange
Cheryl (Concha)
Altinay & Ariel

Papito & Coralia
Orlinda & Osvaldo
Alain & Otanys
Laura & Brad
Eduardo & Ana Lidia

Dianny
Idalis & Marlon
Minervis & Aurelio
Vicki
Yadel & Rosita

OUR PASTORAL FAMILY IN CUBA & USA



Your ongoing support enables the Santiago/Cruz/Jobe crew and APM US office to provide a strong base for the ministry. Pastora Yamile Cruz & Pastor Kevin Jobe serve full-time.

We have been in this calling together since before La Senda was founded and are united not only in this moment, but moving forward as family for the rest of our lives.

Left- Daniel, José, Yami, David

Below- Ella, Livie, Tonni, Grace, Charis, Kevin, Josiah

Daniel Santiago currently studies Architecture at the University of Santa Clara and is pursuing his Dad's legacy in photography, as well.

David Santiago, poet/illustrator, is a Senior in High School and hopes to make a career as a physician.

Grace Jobe is a recent graduate of the University of Cincinnati (Spanish). She is working on a career as an interpreter and (having lived 6 months in Cuba after HS) is learning to guide short-term mission teams for APM.



Livie Jobe is a Junior at The University of Cincinnati with a major in Early Childhood Education.

Josiah Jobe is beginning studies Fall 2022 at The University of Cincinnati College-Conservatory of Music with a major in Music Education/Percussion.

Charis Jobe will attend the the National K9 Learning Center in Columbus OH in Fall 2022 to be licensed as a Dog Trainer.

Ella Jobe is entering her Senior year at Sycamore High School in Cincinnati.



2022 Lead Team Support Cost

Santiago/Cruz/Jobe Combined

Salary/Support	\$39,800
Housing	\$23,500
Insurance	\$24,000
Taxes	\$ 5,200

2022 APM Admin Cost (Est.)

\$ 5,000

LSA MISSIONARIES

Your support facilitates the full-time service and training of our pastoral team, overseen by our Lead Pastora, Yamile Cruz. She serves as head of our network and as Presbyter of the provinces of Matanzas and Habana (Mayabeque) for the Buenas Nuevas Association of churches in Cuba.

Our missionaries discern calling in partnership with our intercessory prayer team, undergo initial field training & study, and are sent out by our evangelism team. After a successful term of service, missionaries are enrolled in seminary studies to be certified and ordained.



Seminary study is made possible by US partners at CODEX Ministries who provide professors, materials, and meals.

Our team currently serves more than 20 church/mission sites outside Jovellanos. The majority of these locations are in small towns and rural villages. Often, our missionaries are the first to bring the Gospel to isolated communities.

We expect to open 4-6 new missions in 2022-23.



Feeding and daily care of each of our incredible missionaries and/or pastors currently costs \$125 monthly.

On the pages below, there is more information about how your support gets these servants where they need to go to bring the good news of the Gospel.



SOULS COMING TO CHRIST



Of everything that your partnership makes possible, nothing is more important than helping people without hope experience the love and grace of Christ and welcoming them as brothers and sisters and fellow citizens of the Kingdom of God.

The prophet Isaiah says that God's people will be called, "oaks of righteousness. A planting of the Lord to display His splendor." Our church is called to expand the planting and deepen its roots, that people have salvation and God's name be praised.

More than 80% (including pastors/missionaries) of our church and mission flock were rescued by grace from atheism, witchcraft, black magic, and a myriad of pagan practices common in Cuba.

In this unique and difficult season in Cuba and around the world, Pastora Yami has reminded us that reaching more and more souls for Christ always has been, is now, and always will be the focus of our calling and everything we do. Preaching, teaching, serving, equipping, project work, building, etc. All about souls.



Above: Friday May 6, 2022. Between 40-50 baptized of the coast of Varadero, Cuba!

Below: Sunday June 5, 2022. Pentecost Celebration @ La Iglesia Volviendo A La Senda Antigua





Connect Us to Your Christ Community

Tell your friends about what God is doing
Give us opportunity to tell the story of La Senda Antigua Help
loved ones be part of something that will bless them

Host or Join us for a Café Cubano

Time in someone's home to relax, share the Ancient Path vision.
Explore God's calling to connect with us in Kingdom building.
Guests are committed to about 90 minutes, hosts 2-3 hours.

We bring coffee, dessert, and a compelling story.



MAKING NEW CONNECTIONS

We want to meet 1000+ new friends between June 2022 and the end of 2023. Everyone knows someone, and we are certain you know people we don't. If the message of Good News in Christ/Kingdom of God rings true, please connect us to others who share the same vision: friends, churches, foundations, or others. And connecting is easy. Share connections with Pastor Kevin Jobe using any of the means listed below. He will take it from there.



Host APM @ Your Church, Club, or Business

We will tailor the Ancient Path/La Senda ministry presentation to any space or group.

Worship, Meal, Mission, or Customized Gathering

Pastor Kevin Jobe will travel regionally or online to share work God is doing through the people of La Senda Antigua.

Contact us to set up a visit.

kevinandtonni@ancientpathministries.org 419-944-9238

HISTORY AND VISION FOR FACILITIES GROWTH



Churches in Cuba are born and grow in homes. Upon our founding in 2011, La Iglesia Volviendo A La Senda Antigua met in a converted barn in the backyard of a member's home. Soon thereafter, friends in the USA blessed us with the funds to purchase a home base for the new congregation and church planting ministry.

From this base, God has raised up a remarkably strong, Spirit-led and Kingdom focused congregation and leadership. The ministry has taken root and grown steadily.

Enabling an ever-increasing reach of the work of the people of La Senda Antigua has been a focus from the beginning. Facilitating an expanding mission field has always required property purchases and new construction. For many years in our home base of Jovellanos, building new structures on existing sites was the most efficient manner in which to work.

However, recent changes to the currency system, along with material scarcities, remarkably high inflation rates, and a strangely inverse abundance of available property at low prices have given us a new set of opportunities even as the complex challenge of funding our work continues. .



For many years, we have envisioned and worked on many purchases and construction projects in various locations, including numerous mission sites and two large multi-phase efforts in Jovellanos.

On the pages ahead you have a look at what has been and what is to come.

KINGDOM-BUILDING FACILITIES-JOVELLANOS PT. 1

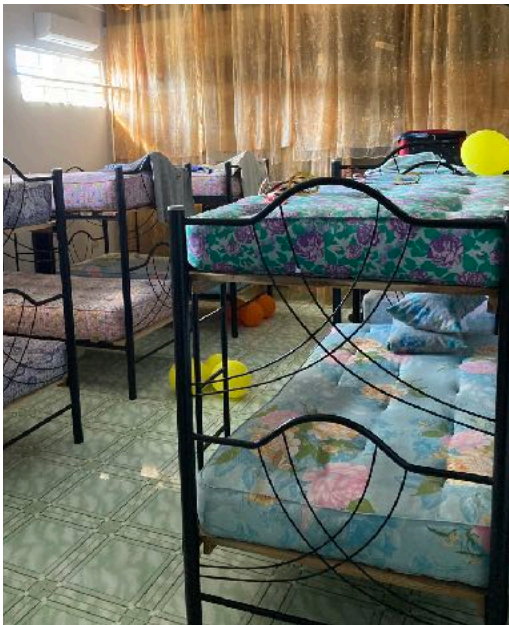


Since 2007, Pastors José & Yami and Pastor Kevin & Tonni have worked, together with many of US partners to develop the Santiago homestead as a suitable space to receive and care for visiting missionaries from the USA and to host events for Cuban ministry leaders, families, youth, and children. In addition to improvements to the main house, we have focused on 2 phases of construction of...

THE LA SENDA ANTIGUA MISSION AND VISITOR HOUSE

1. 1st Floor (Completed in 2020)

- Water system (well, pumps, filters)
- Full service garage (welding, auto repair, storage, toilet)
- Commercial grade kitchen/pantry
- 2 full baths & laundry
- Air-conditioned dorm to sleep 10-12 guests

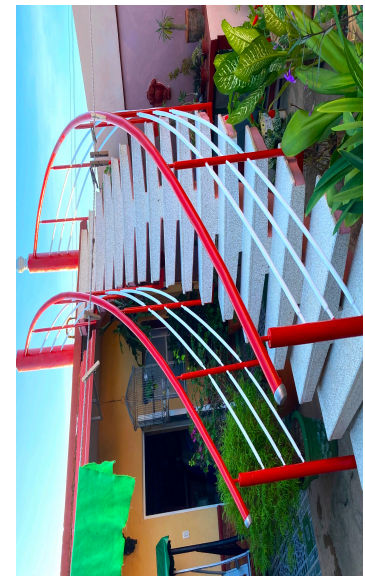


In 2021, a winding staircase (last item Pastor José designed for the ministry) was constructed to access...

2. 2nd Floor

- Two family suites w/bath.
- Men's/women's dorms with full bath.
- Beds for 30-40 combined

Due to previously noted inflation and material scarcity, budget to complete the 2nd story of the Mission and Visitor House as originally planned is estimated between \$120-150,000.



Though we need the space, the cost is prohibitive. However, an unusual "buyer's market" housing situation has provided a viable and ultimately better option.

In April 2022, a unique property became available only six blocks from La Iglesia Volviendo A La Senda Antigua. It is a large walled compound which appears to have been at one point (in free market times) a bed and breakfast type inn. It can currently house 16-20 overnight guests. Relatively simple remodeling could increase capacity by 8-10.

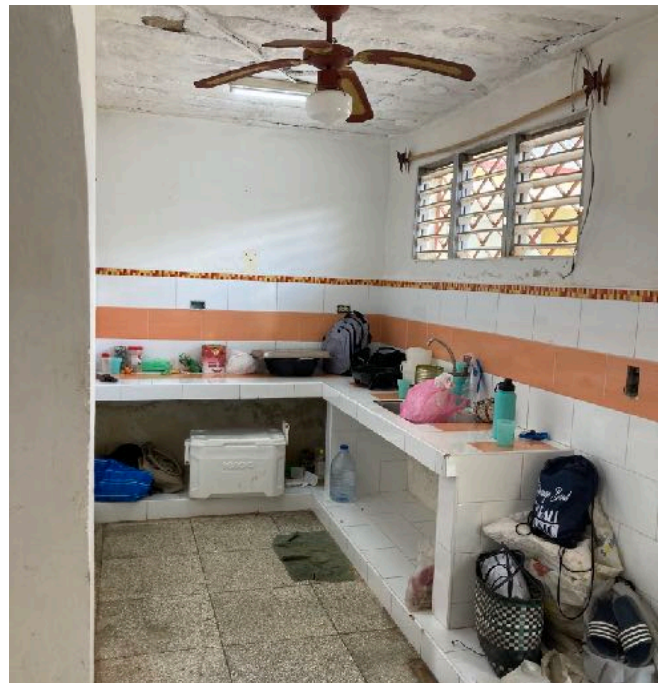
The following page contains photos of and information about the property.

KINGDOM-BUILDING FACILITIES-JOVELLANOS PT. 1 CONTINUED



"The Oasis" (as we have recently christened it) has a plethora of gathering spaces, front and back yard swimming pools, mango trees, plantain trees, and a full kitchen. During the 1st week of May, the owner allowed us use of the property for a youth retreat alongside a mission team from Ohio.

During that week, as our intercessory prayer team spent hours praying on and near the property, Pastora Yami, Pastor Kevin and ministry leaders from Cuba and the US considered practical and visionary possibilities.



The near perfection of the site for future plans, combined with prayerful agreement of our intercessors convinced us to commit to purchase the facility. Now, it is our task discover the partnership and funding to cover the cost of purchase and renovation of what God has gifted us.

Pastors Yami and Kevin have agreed on an all-in financial projection of +/- \$70,000 for the project. This represents \$40,000 for base purchase/administrative costs and \$30,000 to renovate.

The Oasis purchase not only improves on and expands upon the vision of the Mission & Visitors House, it eliminates the need to build a 2nd floor, thus saving an estimated \$50-80,000. The current rooftop will be converted to a restful terrace with a shaded seating area with great views of the sunset (see photo above) for devotions and relaxation.

KINGDOM-BUILDING FACILITIES-JOVELLANOS PT. 2

La Iglesia Volviendo A La Senda Antigua is headquarters of our mission/church planting work. Following a thwarted attempt to purchase adjoining property for expansion (2013), we began new construction intended to be built in 3 phases.

1. 1st floor of a multi-purpose space to provide offices, restrooms, mixed use meeting space, equipped kitchen and pantry for church and outreach use.



Basic construction of Phase I was complete in 2020. Finishing details and equipping continue.

A combination of economic, civic, and global health influences caused an inflation of 5x or more in Cuba starting in 2021. In this same moment, the house we had failed to purchase became available once again and we were able to procure it. This makes Phase 2 unnecessary and will save an estimated \$100,000 in construction costs.



2. 2nd floor of the same structure to provide space for children's and youth ministry classroom and gathering spaces.

3. Enclosure and expansion of the worship space including reconstruction of a small house on the property, allowing for room to contain worship gatherings for a growing congregation.



With construction cost so high, we are relieved to have these projects nearly complete. The new house is currently being renovated for service.

Phase 3 will still require some new construction. The expense estimate for completion is +/- \$70,000.

The current La Senda Antigua worship shelter will be disassembled and moved to serve one of our rural mission congregations.

GETTING WHERE WE NEED TO BE



Above- the rickshaw style Motoneta is a new purchase to be utilized for transport of construction supplies, food for the needy, missionaries to work, and many necessities.

It cost us \$7000 to purchase and we are currently seeking partner aid for anyone who feels called to help us recoup the funds invested in this invaluable tool.



THESE VARIOUS MODES OF TRANSPORT ALLOW US TO

Serve new missions in a growing region. Current sites are from 5 minutes - 3 hours by motor vehicle from Jovellanos.

Welcome mission teams/seminarians from USA & Canada.

Offer transport assistance to other churches and ministries
Bring people from all over the region together in worship, retreats, training, and fellowship.

Distribute food/medicine/aid to people in need.

Collect and maneuver construction materials to and from mission and church sites as we expand and improve.

Your support allows us to reach people in and move materials to places that were impossible for us just a few years ago.

We use what has become a fleet of vehicles: a lot of bicycles, 6 electric motorinas, a car, rickshaw motoneta, 2 passenger vans, and a large truck with capacity for 75 people or tons of food, good and supplies.



As the reach of the Gospel extends outward to the ends of the earth, we are blessed with tools to make it happen in our tiny share. With the expansion of our tools, comes the responsibility to maintain each of these vehicles, from inner tube patches to engine overhauls.

Annual vehicle maintenance cost estimated between \$5-7,000.



SERVING WHEREVER WE GO



Your faithful support is crucial to our ongoing physical, emotional, and spiritual well being ministries. Our team from La Senda works with doctors, Christian psychologists and social workers from the US. We regularly distribute medicines and equipment to a people in great need.

We feed hungry people twice weekly. Our Ready To Serve ministry provides a freshly prepared, nutritionally balanced meal to more than 50 families each Tuesday / Thursday. For this who cannot come to the church, we provide home delivery.

Pastora Yami tells anyone that will listen that the Youth of La Senda Antigua, "¡Son de Fuego!" (they're on fire!). She is spot on. The young people of the church are rising up as never before to preach, teach, pray, praise and prophesy. Many are answering the call to mission and training to take out the Gospel.

We hope to put on a retreat for youth from across Cuba this year. Estimated cost is \$1000.



Worshipping communities are expanding. Cuban churches have a great heritage of praise. Our established churches maintain audio equipment and instruments. This year we have need for many new items, including at least 2 new electric pianos.

Estimated worship ministry cost this year is \$3-4000.



Our Children's Ministry is on the move. Everywhere, kids are a huge focus. In one rural mission, they outnumber adults by more than double. Our Jovellanos ministry is city-wide. Staff work outreach centers and aid other neighborhood churches in programming for children.

Your support even helps send missionaries into prisons. The Lord continues to amaze us.

RE-ESTABLISHED TRAVEL

Open flights. No vaccine requirement. No masks. Unveiled faces on a mission.

2022-2023 Teams Now Forming

Sep 29-Oct 6 Nov 29-Dec 6 Jan 2023

+/- \$400 of your short-term mission team fees are applied to ministry beyond the cost of the trip. Your participation helps to continue the work.



Get Ready for a Kingdom-sized Adventure!

It's unlike any mission trip you have known

The Gospel is extending to the ends of the earth and you can be a part of bringing the Good News.

Make personal connection in prayer, fellowship, encouragement, and Kingdom work.

Forge relationships with lasting potential. See God's Kingdom growing in amazing people and places.

APM will train and care you as we prepare and travel, helping you use your gifts to serve.

2022 Mission Trip Cost

\$2200 All-inclusive

Training/Materials/Guides

Flights/Baggage

Visas Lodging/Transport/Translators

In Country Meals Flight/Medical Insurance



STAYING CONNECTED

Seasons One & Two of our podcast The Word From The Ancient Path are now streaming, each episode available in English and Spanish.

We share sermons from our pastors and tell the story of God's work in the people of the ancient path.

It's on all major streaming platforms and is a great way to connect over a cup of coffee or on your commute.

Start listening now. Season 3 coming Summer 2022.



WORD FROM THE ANCIENT PATH.
PALABRA DE LA SENDA ANTIGUA.
STORIES FROM THE JOURNEY.
HISTORIAS DEL CAMINO.

ANCIENT PATH MINISTRIES

La Iglesia Volviendo
A La Senda Antigua

ANCIENT PATH ON ALL PLATFORMS. INVITE YOUR FRIENDS ALONG.

WEBSITE

<https://ancientpathministries.org>

FACEBOOK

<facebook.com/ancientpathministries.org>

Yami Cruz. Kevin Jobe. Tonni Jobe.

INSTAGRAM

@ancientpathministries

YOUTUBE

Ancient Path La Senda Antigua

LINKEDIN

<https://www.linkedin.com/in/kevin-jobe-1749a517b/>

UPDATES BY EMAIL

kevinandtonni@ancientpathministries.org

PASTOR KEVIN BY PHONE/TEXT

419-944-9238

