

4Q 2024 REFLECTIONS/VISION 2025

BRINGING.



CONNECTING.



BUILDING.



**Volviendo a la
Senda Antigua**

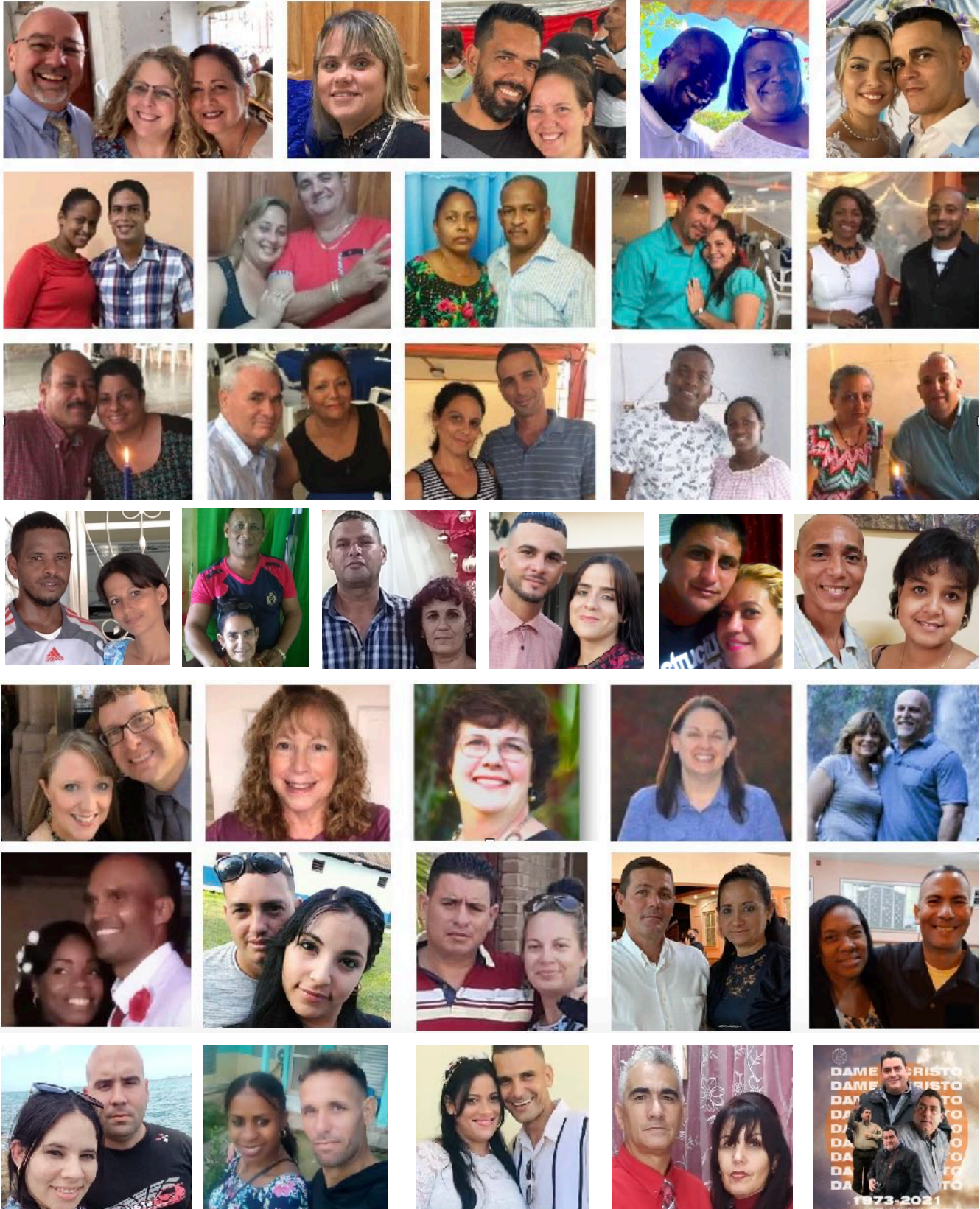
BIENVENIDO
A CASA



SOMOS UNA GRAN FAMILIA

ANCIENT PATH MINISTRIES/LA SENDA ANTIGUA LEADERS

Lead Pastors, APM Board, Senda Antigua Pastors, Missionaries, & Admin. Extending the reach of the Gospel!



Going Out, Welcoming In

The Lord will keep you from all harm—he will watch over your life, the Lord will watch over your coming and going both now and forevermore. - Psalm 121:7-8

The last quarter of 2024 was a busy season for all of us and a wonderful example of how the movement of the Kingdom of God happens as we reach out and as we invite in.

Reaching out this fall, La Senda Antigua leaders partnered with World Serve Canada to provide and deliver crisis relief (food, clothing, cleaning supplies, encouragement) to people suffering the effects of the recent earthquake in the eastern regions of the nation.



Ancient Path Ministries brought teams of friends down from Ohio and New York in late October and early December.

The first of these teams laid groundwork for what we hope will become an ongoing partnership to use a common love of baseball and Jesus to bring the Gospel to people we have yet to reach.

60 of our Cuban pastors and missionaries continued graduate level seminary courses of through the work of CODEX Ministries & Seminario del Deste.

In November, Pastors Roberto & Waleska Orellana of Lakeland, FL, and Dominican Christian Artist, Egleйда, brought the Mujeres de Influencia (Women of Influence) Conference to La Senda Antigua. 1000 women registered. 2000 showed up for a tremendous (if very crowded) blessing.

The December mission team represented 3 northern Ohio churches and the beginnings of new relationships. It also served as an unofficial announcement to Pastora Yami of the engagement of her niece, APM translator, Gracie Jobe (daughter of Kevin & Tonni) & Cole Karnes.

By the end of the year, our church plants had reached 45 sites and our feeding ministries were cooking 4500 meals per month.



HEMOS PREPARADO UN LUGAR PARA EL ESPIRITU SANTO



Vision 2025- Bearing good fruit to multiply the Kingdom

God blessed them and said to them, "Be fruitful and increase in number; fill the earth and subdue it..." - Genesis 1:28

Your partnership in 2025 will enable the continued expansion of our reach on behalf of the Gospel. Pastor Yami has called the people of La Senda Antigua to "multiply", that is to reach more and more souls for Christ, and to do so with a fruitfulness that is pure and complete by the power of the Holy Spirit.

WE NEED YOU to provide the prayerful, financial, and connectional support to bring the vision to reality.

Here is a quick glance at our financial goals, followed by your path to partnership with us.

2025 Lead Team Support Cost Santiago/Jobe/Cruz Combined

Salary/Support \$45,200 Housing \$24,000 Insurance \$15,000 Taxes \$ 4,900

2025 Ancient Path Ministries Administrative Costs (Est.) \$ 7,000



Pastor/Missionary/Admin Team

Our growing full-time team in Cuba sees to spiritual, emotional, and physical needs of our neighbors in more than 45 church plant/mission sites.

2025 Missionary/Pastoral/Admin Support

Feeding and care of each Cubano missionary/pastor/administrator family costs \$125 monthly.

+/- \$50,000



Getting The Gospel To New Places/Providing Spaces For Fruitful New Ministries



The Gospel extends in Cuba on wheels: Bicycle. Electric Motorbike. Car, Van, Motorcycle. Moto-rickshaw. Tractor-Trailer Passenger/Freight Truck.

2025 vehicle purchase/maintenance/fuel projection **\$48,000**

We're committed to new planting for the Kingdom of God. Permanent homes for growing congregations require property purchase, renovation, and ongoing maintenance.

These facilities also support our growing outreach ministries, including sustenance, nursery school, community children's ministry, addiction care, senior citizens well-being, and hospital/nursing home/prison chaplaincy.

2025 property purchase/maintenance/reno projection **\$50,000**

2025 Outreach Financial Projections

Youth Ministry	\$ 1,500
City Children's Ministry	\$ 2,500
Senior Citizens	\$ 500
Alcohol Addiction	\$ 500
Chaplaincy	\$ 1,000
Island Wide Crisis Relief	\$ 5,000
Medicines/Equipment	\$ 7,000
Special Events	\$ 8,000



The economic crisis that has plagued Cuba for the last several years continues and is worsening. Many people struggle to afford even basic food staples.

Every year since 2019, La Senda Antigua has deepened our commitment to food security, serving 4500+ free meals per month in 2024.



2025 Local Food Outreach Financial Projection. **\$66,000**

NOW, WE NEED YOUR PARTNERSHIP!

As the first page says, we are a big family.

We need your support in prayer.

We need your financial support.

We need your help to make new connections.

We'd love for you to come experience the work.

**ON THE PAGES AHEAD- YOUR PATHWAYS TO PARTNERSHIP
CAN'T WAIT TO SEE YOU ON THE ANCIENT PATH!**

YOUR PATHWAYS TO PARTNERSHIP

We invite you to consider any-all of these opportunities to join us in the work of the ancient path.



It always pray with joy because of your partnership in the gospel from the first day until now, being confident of this, that he who began a good work in you will carry it on to completion until the day of Christ Jesus.-Philippians 1:5-6

1. PRAYER - OUR MOST CRUCIAL NEED

2025 and Beyond

PROVISION- Prayer, Connectional, & [Financial Support](#).

Yami, Kevin & Tonni, family, leaders, servant ministry team.
For faithfulness, [UNITY](#), equipping, wisdom, power.

CUBA-economic/civil crisis, US-Cuba relationship.

Ask God to send workers to field. He'll show you what to do.

All the partnership opportunities presented herein.



2. FOUNDATIONAL COVENANT FINANCIAL SUPPORT

WE NEED YOUR PARTNERSHIP TO GROW THE WORK

<u>Covenant Support Goal (Monthly avg.) Dec 2025</u>	\$22,000*	
<u>Monthly Covenant Support Jan-Jun 2024</u>	\$ 12,000	54.5%
Monthly Covenant Support Jan-Sep 2024	\$ 10,500	47.7%
Monthly Covenant Support Jan-Dec 2024	\$ 10,800	49.1%

*Monthly covenant financial support total does not include mission team fees or large one-time project offerings.

OUR BASE COVENANT GIVING NEEDS GROWTH ACROSS 2025 TO KEEP THE MINISTRY FINANCIALLY HEALTHY.

YOUR FAITHFUL SUPPORT ENABLES EXPANSION OF THE REACH OF THE GOSPEL.

Without you, we cannot do this work.
Please consider regular monthly/quarterly/annual partnership.
Here are some ways by which you can give.

This QR Code for **ZELLE**

From your banking or ZELLE to 419-944-9238.
Leave note blank or indicate APM contribution.



**ANCIENT
PATH
MINISTRIES**

BANK/IRA/DAF/PERSONAL/BUSINESS CHECK

Set recurring gift to Ancient Path Ministries
10889 Lake Thames Dr, Cincinnati, OH, 45242

OR

This QR Code for **Zeffy**



Use online form to set up one-time or ongoing partnership support.

Zeffy is a free service for Non-Profits.

You can donate to Zeffy or choose -
Other/\$0 in tip line to decline.

3. NEW CONNECTIONS IN CHRIST



We want to meet hundreds of new friends in 2025 and beyond. If our message of the Kingdom rings true, please connect us to family, friends, churches, co-workers, foundations. Some ways to help:

Send A Friend's Contact Info To Pastor Kevin

With permission to drop your name
He can call/email/visit them directly

Host or Join Friends for a Café Cubano

In someone's home. Relax. Share vision. Explore.
Guests committed to 90 minutes. Hosts 2-3 hours.
We bring coffee/dessert/compelling story.

Host APM @ Your Church, Club, Business

Presentation for any space or group.
Worship, Meal, Mission, Customized Gathering

Kevin Jobe travels regionally/online to share the
La Senda Antigua vision. Contact us for a visit.

kevinandtonni@ancientpathministries.org

419-944-9238



STAYING CONNECTED

APM IS EASY TO FIND. INVITE LOVED ONES TO CONNECT TO US.



Now Streaming-Podcast Seasons 1-5

The Word From The Ancient Path. In English-Spanish
Sermons/stories of God's work in us . Podcast platforms/Facebook



WORD FROM THE ANCIENT PATH.
PALABRA DE LA SENDA ANTIGUA.
STORIES FROM THE JOURNEY.
HISTORIAS DEL CAMINO.



Apple
Podcasts



iHeart
PODCAST
NETWORK

WEBSITE

<https://ancientpathministries.org>

FACEBOOK

<facebook.com/ancientpathministries.org>

or Yami Cruz, Tonni Jobe.

Iglesia Buenas Nuevas Volviendo A La Senda Antigua

INSTAGRAM

@ancientpathministries

YOUTUBE

Ancient Path La Senda Antigua

LINKEDIN

<https://www.linkedin.com/in/kevin-jobe-1749a517b/>

EMAIL

kevinandtonni@ancientpathministries.org

PASTOR KEVIN PHONE/TEXT

419-944-9238



4. COME WITH US ON A MISSION TO CUBA

Get Ready for a Kingdom-sized Adventure!

It's unlike any mission trip you have known

The Gospel extends to the ends of the earth.

You can be part of bringing the Good News.

Personal connection in prayer, fellowship, encouragement, Kingdom work.

New relationships with lasting potential.

God's Kingdom growing in amazing people and places.

Ancient Path Ministries will...

Train/care for you as we get there and home.

Help you use your gifting before, during, and after the trip.

+/- \$400 of fees applied to ministry beyond cost of the trip.

Your participation helps to continue the work.

Teams now forming for 2025-2026



2025 Mission Trip Cost

\$2300 All-inclusive

Training/Materials/Guides/Translators

Flights/Baggage/Visas

Flight & Medical Insurance

Lodging/Transport/In Country Meals

