

1ST Q 2025 REFLECTIONS



**Volviendo a la
Senda Antigua**

IGLESIA PENTECOSTAL BUENAS NUEVAS



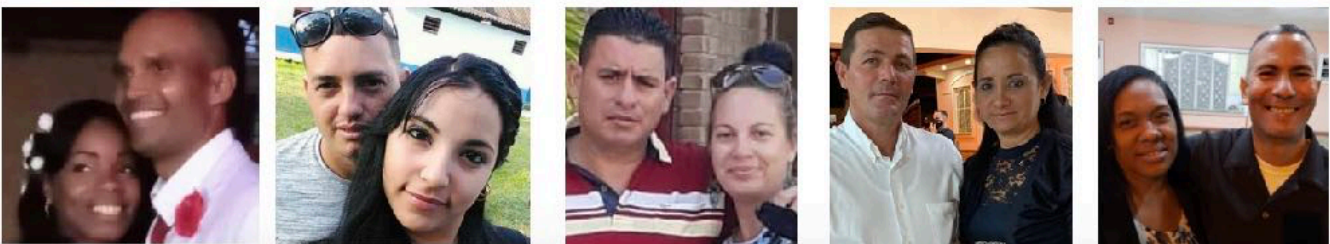
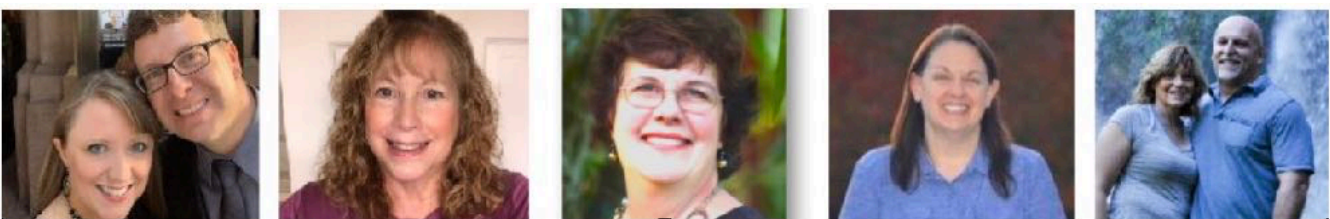
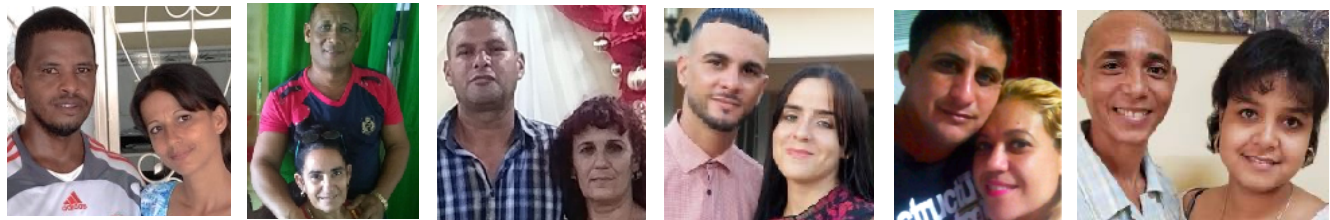
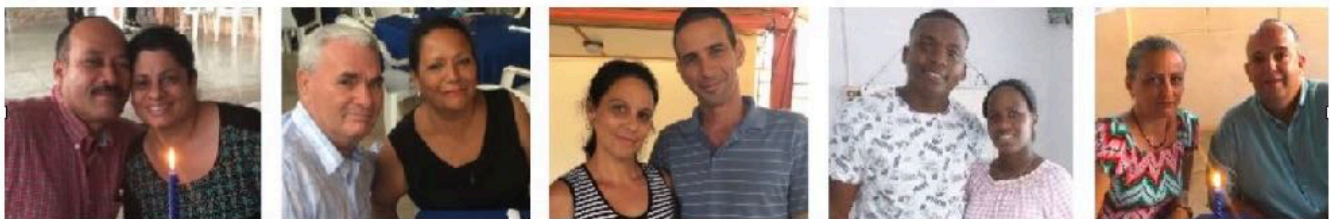
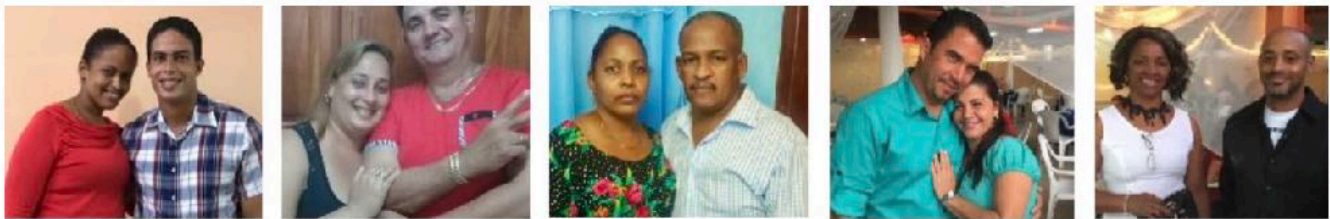
**ANCIENT
PATH
MINISTRIES**



BRINGING. CONNECTING. BUILDING.

OUR ANCIENT PATH MINISTRIES/LA SENDA ANTIGUA LEADERS

Lead Pastors, APM Board, La Senda Antigua Pastors, Missionaries, & Admin. Extending the reach of the Gospel!



New Symbol-Same Vision

The Spirit of the sovereign Lord is upon me, for the Lord has anointed me to preach good news...to bind up...to proclaim freedom...release from darkness- Isaiah 61

The new logo of Volviendo A La Senda Antigua was designed by our own Daniel Santiago (son of José & Yami) from feedback received from church family who, asked to characterize our community, responded overwhelmingly with three key aspects, all of them represented in the logo:

- ◆ Service
- ◆ Community
- ◆ The Holy Spirit



On January 11, 1200 of us met to celebrate our 14th birthday as a church. Pastora Yami spoke an aspirational word drawn from half of one verse of scripture-

God blessed them and said to them, "Be fruitful and multiply..."

Genesis 1:29a

2025 will be a year of growth, of multiplication but, if the fruit we bear is not good, then any growth we experience will not benefit the Kingdom of God. The Lord has called us to bear healthy, complete fruit. Multiplication will naturally follow. We must bring a new attitude or we will not have a new year, but just another year.

On the pages ahead, are some examples of the Kingdom attitude of our work (and yours) for the sake of the Gospel in Cuba.



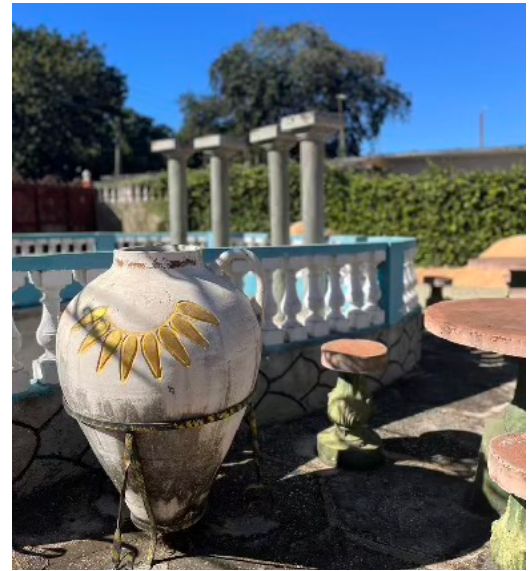


La Senda de Ternura

For years, Yami & our team had a dream: a gospel-centered nursery school to serve the families of La Senda Antigua. On March 3, doors were opened at The Way of Tenderness adjacent to church. 22 community children receive care and biblical teaching from our dedicated staff, free of charge. Nothing else like it exists in Jovellanos. 4 weeks in, Yami says we are seeing tremendous things; behavior/personality changes, and spiritual growth.

YOUR SUPPORT has made this possible. **THANK YOU!!**





3 yrs ago, Pastora Yami envisioned having a place to serve as refuge from the difficulties of daily life, for fellowship among believers, and to be a training/retreat center for all aspects of ministry. The 1st week of May 2022, Ancient Path purchased a property that we named

The Oasis

Work immediately began to make this vision a reality. Currently, demolition is completed; 1st phases of construction are underway. When complete, **The Oasis** will house meeting/teaching facilities, dormitory space w/bathrooms for 60+ guests, full-service indoor-outdoor kitchen/dining, and a swimming/baptismal pool.



Producing Good Fruit to Extend The Gospel

Your willing, faithful partnership continues bearing fruit in our common work. A few reminders of what you make happen:

- ◆ Extending the Gospel in Cuba. Souls for Christ are priority #1
- ◆ 4500+ monthly meals for Jovellanos and outreach villages
- ◆ Family support for Cuban missionary/pastoral/admin staff
- ◆ Maintenance of 45 current house church/outreach sites
- ◆ Transportation and/or housing for pastors/missionaries
- ◆ Construction/renovation/maintenance of all facilities
- ◆ Service and community outreach ministries in all locations
- ◆ Day to day operations of Ancient Path Ministries USA



And so, the work continues to multiply, we need you, as a co-worker in the effort, to help us see to it that we can continue.

The home church in Jovellanos is expanding in number and (as seen herein and in our 2025 Vision from January) in reach and scope. This leaves us short on space. As Pastor José said, this is a good problem. We must expand so that more folks can know Christ and so that more disciples can be shaped, then trained and sent to reach more souls.

Our mission/house church sites are currently at 45, with new openings expected in the coming weeks. New pastors continue coming on full-time.

The financial needs projection for 2025, to fulfill the vision in Cuba and put firm foundation under the USA ministry is +/- \$400k. Currently (apart from list above) the following items are at the top of Pastora Yami's agenda:

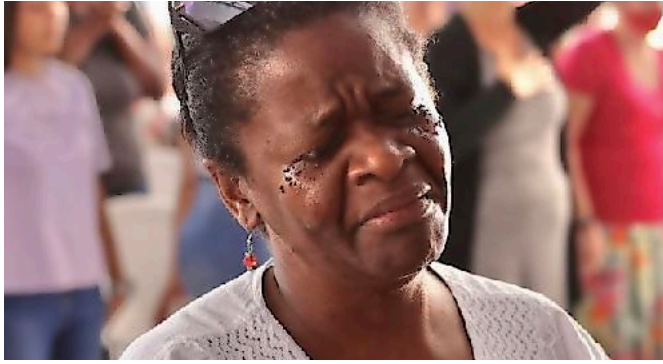
- ◆ Property to expand La Senda Antigua \$25-30k
- ◆ Kitchen rebuild/renovation for food ministries \$3k
- ◆ Open air rooftop class shelters (pic at right) \$3k
- ◆ New enclosed class and meeting room \$4k
- ◆ Tables for food ministry and gatherings \$3.2k
- ◆ Transportation serving outlying areas \$30k

Beyond these items, Yami already has dreams of next steps which when realized would add another \$35-40k to our projection. Keep reading and you will see how much further we have to go to reach these goals. **WE NEED YOU!**



YOUR PATHWAYS TO PARTNERSHIP

We invite you to consider any-all of these opportunities to join us in the work of the ancient path.



**ANCIENT
PATH
MINISTRIES**

I always pray with joy because of your partnership in the gospel from the first day until now, being confident of this, that he who began a good work in you will carry it on to completion until the day of Christ Jesus.-Philippians 1:5-6

1. PRAYER - OUR MOST CRUCIAL NEED

2025 and Beyond

PROVISION- Prayer, Connectional, & [Financial Support](#).

Yami, Kevin & Tonni, family, leaders, servant ministry team.
For faithfulness, [UNITY](#), equipping, wisdom, power.

CUBA-economic/civil crisis, US-Cuba relationship.

Ask God to send workers to field. He'll show you what to do.

All the partnership opportunities are presented herein.



2. FOUNDATIONAL COVENANT FINANCIAL SUPPORT

WE NEED YOUR PARTNERSHIP TO GROW THE WORK

Covenant Support Goal (Monthly avg.) Dec 2025		\$22,000*
Monthly Covenant Support Jan-Jun 2024	\$ 12,000	54.5%
Monthly Covenant Support Jan-Dec 2024	\$ 10,800	49.1%
Monthly Covenant Support Jan-Mar 2025	\$ 10,600	48.4%

*Monthly covenant financial support total does not include mission team fees or large one-time project offerings.



YOUR FAITHFUL SUPPORT ENABLES EXPANSION OF THE REACH OF THE GOSPEL.

*WE are a team! Without you, we cannot accomplish the task.
Please consider regular monthly/quarterly/annual partnership.
Here are channels through which you can contribute.*

This QR Code for **ZELLE**

From your banking or ZELLE to 419-944-9238.
Leave note blank or indicate APM contribution.



**ANCIENT
PATH
MINISTRIES**

BANK/IRA/DAF/PERSONAL/BUSINESS CHECK

Set recurring gift to **Ancient Path Ministries**
10889 Lake Thames Dr, Cincinnati, OH, 45242
OR

This QR Code for **Zeffy**



Use online form to set up one-time or ongoing partnership support.

Zeffy is a free service for Non-Profits.

You can donate to Zeffy or choose -
Other/\$0 in tip line to decline.

3. NEW CONNECTIONS IN CHRIST



We want to meet hundreds of new friends in 2025 and beyond. If our message of the Kingdom rings true, please connect us to family, friends, churches, co-workers, foundations. Some ways to help:

Send A Friend's Contact Info To Pastor Kevin

With permission to drop your name
He can call/email/visit them directly

Host or Join Friends for a Café Cubano

In someone's home. Relax. Share vision. Explore.
Guests committed to 90 minutes. Hosts 2-3 hours.
We bring coffee/dessert/compelling story.

Host APM @ Your Church, Club, Business

Presentation for any space or group.
Worship, Meal, Mission, Customized Gathering

Kevin Jobe travels regionally/online to share the
La Senda Antigua vision. Contact us for a visit.

kevinandtonni@ancientpathministries.org

419-944-9238



STAYING CONNECTED

APM IS EASY TO FIND. INVITE LOVED ONES TO CONNECT TO US.



Now Streaming Podcast Seasons 1-5 Season 6 Coming in 2025

The Word From The Ancient Path. In English-Spanish
Sermons/stories of God's work in us . Podcast platforms/Facebook



WEBSITE

<https://ancientpathministries.org>

FACEBOOK

<facebook.com/ancientpathministries.org>

or Yami Cruz, Tonni Jobe.

Iglesia Buenas Nuevas Volviendo A La Senda Antigua

INSTAGRAM

@ancientpathministries

YOUTUBE

Ancient Path La Senda Antigua

LINKEDIN

<https://www.linkedin.com/in/kevin-jobe-1749a517b/>

EMAIL

kevinandtonni@ancientpathministries.org

PASTOR KEVIN PHONE/TEXT

419-944-9238



4. COME WITH US ON A MISSION TO CUBA

Get Ready for a Kingdom-sized Adventure!

It's unlike any mission trip you have known

The Gospel extends to the ends of the earth.

You can be part of bringing the Good News.

Personal connection in prayer, fellowship, encouragement, Kingdom work.

New relationships with lasting potential.

God's Kingdom growing in amazing people and places.

Ancient Path Ministries will...

Train/care for you as we get there and home.

Help you use your gifting before, during, and after the trip.

+/- \$400 of fees applied to ministry beyond cost of the trip.

Your participation helps to continue the work.

Teams now forming for 2025-2026



2025 Mission Trip Cost

\$2300 All-inclusive

Training/Materials/Guides/Translators

Flights/Baggage/Visas

Flight & Medical Insurance

Lodging/Transport/In Country Meals

